



Taps for steels from 25~45 HRC

# H-TAP

Volume 2



# KEY FEATURES: S-TAP

---



**1** H-Series :  
For steels from 25~45 HRC

**2** Also for tool steels

**3** Steam Oxide Treatment :  
Improved lubricity

**4** Powder metal :  
High wear resistance

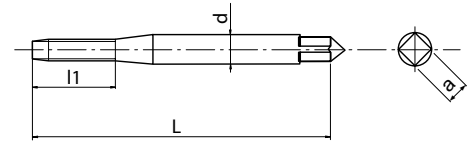
# H-SFT

Threading | Cutting taps | Metric

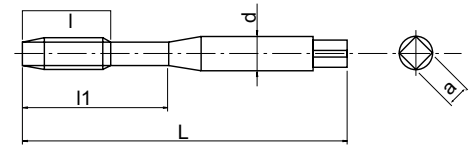


- Powder metal low spiral-fluted cutting tap for blind holes
- Steam oxide treatment
- For hardened steels up to 45 HRC

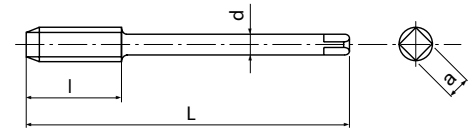
Type 1



Type 2



Type 3



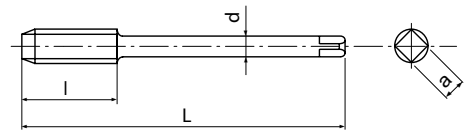
<b>P</b> C>0.45%	<b>P</b> SCM	<b>K</b> GGG	<b>S</b> Ti	<b>S</b> Ni	<b>H</b> 25-35 HRC	<b>H</b> 35-45 HRC	
7-12	7-12	7-12	3-5	1-3	4-8	4-8	m/min

<b>M</b>	<b>PM</b>	<b>OX</b>	<b>15°</b>	<b>ISO 2 6H</b>	<b>C/3</b>	<b>DIN 371</b>	<b>DIN 376</b>
----------	-----------	-----------	------------	-----------------	------------	----------------	----------------

EDP	M	P	L	l	l1	d	a	Z	Type	DIN	Price
83212560	2	0,4	45	-	8	2,8	2,1	2	1	DIN371	
83213360	2,5	0,45	50	-	9	2,8	2,1	2	1	DIN371	
83213860	3	0,5	56	-	18	3,5	2,7	3	2	DIN371	
83214460	4	0,7	63	-	21	4,5	3,4	3	2	DIN371	
83214960	5	0,8	70	-	25	6	4,9	3	2	DIN371	
83215560	6	1	80	-	30	6	4,9	3	2	DIN371	
83216160	8	1,25	90	-	35	8	6,2	3	2	DIN371	
83216960	10	1,5	100	-	39	10	8	3	2	DIN371	
83317960	12	1,75	110	18	-	9	7	3	3	DIN376	
83319160	14	2	110	20	-	11	9	3	3	DIN376	
83320260	16	2	110	20	-	12	9	3	3	DIN376	
83321460	18	2,5	125	25	-	14	11	4	3	DIN376	
83322860	20	2,5	140	25	-	16	12	4	3	DIN376	

# H-SFT

Threading | Cutting taps | Metric Fine



- Powder metal low spiral-fluted cutting tap for blind holes
- Steam oxide treatment
- For hardened steels up to 45 HRC

Threading | Cutting taps

<b>P</b>	<b>P</b>	<b>K</b>	<b>S</b>	<b>S</b>	<b>H</b>	<b>H</b>	
C>0.45%	SCM	GGG	Ti	Ni	25-35 HRC	35-45 HRC	
7-12	7-12	7-12	3-5	1-3	4-8	4-8	m/min

<b>MF</b>	<b>PM</b>	<b>OX</b>	<b>15°</b>	<b>ISO 2 6H</b>	<b>C/3</b>		<b>DIN 374</b>
-----------	-----------	-----------	------------	---------------------	------------	--	----------------

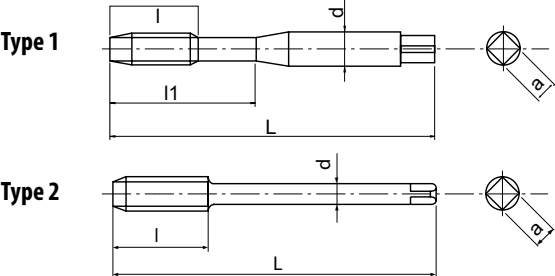
Metric Fine

EDP	MF	P	L	EDP	l	d	a	Z	DIN	Price
83214060	3	0,35	56	4	4	2,2	-	3	DIN374	
83214560	4	0,5	63	6	6	2,8	2,1	3	DIN374	
83215160	5	0,5	70	7	7	3,5	2,7	3	DIN374	
83215660	6	0,75	80	8	8	4,5	3,4	3	DIN374	
83215760	6	0,5	80	8	8	4,5	3,4	3	DIN374	
83216360	8	0,75	80	10	10	6	4,9	3	DIN374	
83216260	8	1	90	10	10	6	4,9	3	DIN374	
83217160	10	1	90	12	12	7	5,5	4	DIN374	
83217060	10	1,25	100	12	12	7	5,5	4	DIN374	
83218260	12	1	100	14	14	9	7	4	DIN374	
83218160	12	1,25	100	14	14	9	7	4	DIN374	
83218060	12	1,5	100	14	14	9	7	4	DIN374	
83219260	14	1,5	100	16	16	11	9	5	DIN374	
83220360	16	1,5	100	16	16	12	9	5	DIN374	
83221660	18	1,5	110	20	20	14	11	5	DIN374	
83223060	20	1,5	125	20	20	16	12	5	DIN374	
83224060	22	1,5	125	20	20	18	14,5	5	DIN374	
83225060	24	1,5	140	24	24	18	14,5	5	DIN374	



# H-SFT

Threading | Cutting taps | UNJF



- Powder metal low spiral-fluted cutting tap for blind holes
- Steam oxide treatment
- For hardened steels up to 45 HRC

Threading | Cutting taps

<b>P</b> C>0.45%	<b>P</b> SCM	<b>K</b> GGG	<b>S</b> Ti	<b>S</b> Ni	<b>H</b> 25-35 HRC	<b>H</b> 35-45 HRC	<b>m/min</b>
7-12	7-12	7-12	3-5	1-3	4-8	4-8	

UNJF	PM	OX	15°	ANSI 3B	C/2,5		DIN 2184-1
------	----	----	-----	---------	-------	--	------------

EDP	UNJF	P	L	l	l1	d	a	Z	Type	DIN	Price
48009467	10	32	70	-	25	6	4,9	3	1	DIN2184-1	
48009472	1/4	28	80	-	30	7	5,5	3	1	DIN2184-1	
48009476	5/16	24	90	-	35	8	6,2	3	1	DIN2184-1	
48009481	3/8	24	90	-	35	9	7	3	1	DIN2184-1	
48009486	7/16	20	100	15	-	8	6,2	3	2	DIN2184-1	
48009491	1/2	20	100	16	-	9	7	3	2	DIN2184-1	

UNJF

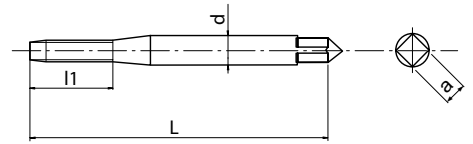
# H-POT

Threading | Cutting taps | Metric

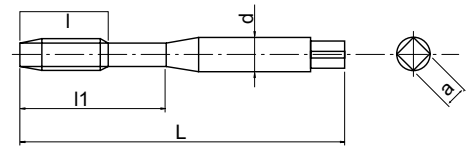


- Powder metal spiral-point cutting tap for through holes
- Steam oxide treatment
- For hardened steels up to 45 HRC

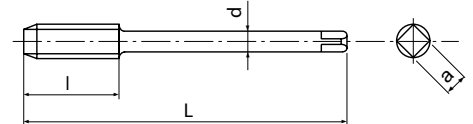
Type 1



Type 2



Type 3



<b>P</b> C>0.45%	<b>K</b> GGG	<b>S</b> Ti	<b>S</b> Ni	<b>H</b> 25-35 HRC	<b>H</b> 35-45 HRC	
8-13	10-15	4-6	2-4	6-10	6-10	m/min

<b>M</b>	<b>PM</b>	<b>OX</b>	<b>ISO 2 6H</b>	<b>B/5</b>	<b>DIN 371</b>	<b>DIN 376</b>
----------	-----------	-----------	-----------------	------------	----------------	----------------

EDP	M	P	L	l	l1	d	a	Z	Type	DIN	Price
88412560	2	0,4	45	-	8	2,8	2,1	2	1	DIN371	
88413360	2,5	0,45	50	-	9	2,8	2,1	2	1	DIN371	
88413860	3	0,5	56	-	18	3,5	2,7	3	2	DIN371	
88414460	4	0,7	63	-	21	4,5	3,4	3	2	DIN371	
88414960	5	0,8	70	-	25	6	4,9	3	2	DIN371	
88415560	6	1	80	-	30	6	4,9	3	2	DIN371	
88416160	8	1,25	90	-	35	8	6,2	3	2	DIN371	
88416960	10	1,5	100	-	39	10	8	3	2	DIN371	
88517960	12	1,75	110	28	-	9	7	3	3	DIN376	
88519160	14	2	110	30	-	11	9	3	3	DIN376	
88520260	16	2	110	32	-	12	9	4	3	DIN376	
88521460	18	2,5	125	34	-	14	11	4	3	DIN376	
88522860	20	2,5	140	34	-	16	12	4	3	DIN376	

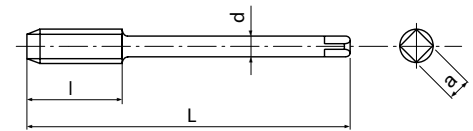
Threading | Cutting taps



Metric

# H-POT

Threading | Cutting taps | Metric Fine



- Powder metal spiral-point cutting tap for through holes
- Steam oxide treatment
- For hardened steels up to 45 HRC

Threading | Cutting taps

<b>P</b> ◉ <small>C&gt;0.45%</small>	<b>K</b> ◉ GGG	<b>S</b> ◉ Ti	<b>S</b> ◉ Ni	<b>H</b> ◉ 25-35 HRC	<b>H</b> ◉ 35-45 HRC	<b>m/min</b>
8-13	10-15	4-6	2-4	6-10	6-10	

<b>MF</b>	<b>PM</b>	<b>OX</b>	<b>ISO 2 6H</b>	<b>B/5</b>		<b>DIN 374</b>
-----------	-----------	-----------	---------------------	------------	--	----------------

EDP	MF	P	L	l	d	a	Z	DIN	Price
88414060	3	0,35	56	8	2,2	-	3	DIN374	
88414560	4	0,5	63	10	2,8	2,1	3	DIN374	
88415160	5	0,5	70	12	3,5	2,7	3	DIN374	
88415660	6	0,75	80	14	4,5	3,4	3	DIN374	
88415760	6	0,5	80	14	4,5	3,4	3	DIN374	
88416360	8	0,75	80	18	6	4,9	3	DIN374	
88416260	8	1	90	22	6	4,9	3	DIN374	
88417160	10	1	90	20	7	5,5	3	DIN374	
88417060	10	1,25	100	24	7	5,5	3	DIN374	
88418260	12	1	100	22	9	7	3	DIN374	
88418160	12	1,25	100	22	9	7	3	DIN374	
88418060	12	1,5	100	22	9	7	3	DIN374	
88419260	14	1,5	100	22	11	9	3	DIN374	
88420360	16	1,5	100	22	12	9	4	DIN374	
88421660	18	1,5	110	25	14	11	4	DIN374	
88423060	20	1,5	125	25	16	12	4	DIN374	
88424060	22	1,5	125	25	18	14,5	4	DIN374	
88425060	24	1,5	140	28	18	14,5	4	DIN374	

Metric Fine

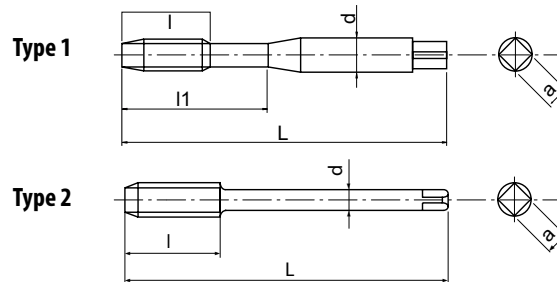






# H-POT

Threading | Cutting taps | UNJF



- Powder metal spiral-point cutting tap for through holes
- Steam oxide treatment
- For hardened steels up to 45 HRC

Threading | Cutting taps

>0.45%	GGG	Ti	Ni	25-35 HRC	35-45 HRC	m/min
8-13	10-15	4-6	2-4	6-10	6-10	

UNJF	PM	OX	ANSI 3B	B/5		
------	----	----	---------	-----	--	--

EDP	UNJF	P	L	l	l1	d	a	Z	Type	DIN	Price
48010467	10	32	70	-	25	6	4,9	3	1	DIN2184-1	
48010472	1/4	28	80	-	30	7	5,5	3	1	DIN2184-1	
48010476	5/16	24	90	-	35	8	6,2	3	1	DIN2184-1	
48010481	3/8	24	90	-	35	9	7	3	1	DIN2184-1	
48010486	7/16	20	100	20	-	8	6,2	3	2	DIN2184-1	
48010491	1/2	20	100	22	-	9	7	3	2	DIN2184-1	

**OUT NOW!**





shaping your dreams

#### **OSG EUROPE LOGISTICS**

Avenue Lavoisier 1  
B-1300 Z.I. Wavre - Nord - Belgium  
Tel: +32 10 23 05 07  
Fax: +32 10 23 05 51  
info@osgeurope.com

#### **OSG BELUX**

Avenue Lavoisier 1  
B-1300 Z.I. Wavre - Nord - Belgium  
Tel: +32 10 23 05 11  
Fax: +32 10 23 05 31  
info@osg-belgium.com

#### **OSG FRANCE**

Parc Icade, Paris Nord 2  
Immeuble "Le Rimbaud"  
22 Avenue des Nations  
CS66191 - 93420 Villepinte - France  
Tel: +33 1 49 90 10 10  
Fax: +33 1 49 90 10 15  
sales@osg-france.com

#### **OSG NETHERLANDS**

Bedrijfsweg 5 - 3481 MG Harmelen  
Tel: +31 348 44 2764  
Fax: +31 348 44 2144  
info@osg-nl.com

#### **OSG UK**

Shelton house, 5 Bentalls  
Pipps Hill Ind Est, Basildon Essex SS14 3BY  
Tel: +44 845 305 1066  
Fax: +44 845 305 1067  
sales@osg-uk.com

#### **SLOVAKIA**

Branch office of OSG Europe Logistics s.a.  
Tel (SK) +421 2 4329 1295  
Tel (BE) +32 10 23 05 07  
Fax (BE) +32 10 23 05 51  
sales-osgsvk@osgeurope.com

#### **OSG POLAND Sp. z.o.o.**

ul. Spółdzielcza 57  
05-074 Halinów - Poland  
Tel: +22 760 82 71  
Fax: +22 760 82 71  
osg@osg-poland.com

#### **OSG GERMANY**

Karl-Ehmann-Str. 25  
D - 73037 Göppingen - Germany  
Tel: +49 7161 6064 - 0  
Fax: +49 7161 6064 - 444  
info@osg-germany.de

#### **OSG SCANDINAVIA**

(For Scandinavian countries)  
Langebjergvaenget 16  
4000 Roskilde - Denmark  
Tel: +45 46 75 65 55  
Fax: +45 46 75 67 00  
osg@osg-scandinavia.com

#### **SWEDEN**

Branch office of OSG SCANDINAVIA  
Abrahams Gränd 8  
295 35 Bromölla - Sweden  
Tel: +46 40 41 22 55  
Fax: +46 40 41 32 55  
osg@osg-scandinavia.com

#### **OSG IBERICA**

Bekolarra 4  
E - 01010 Vitoria-Gasteiz - Spain  
Tel: +34 945 242 400  
Fax: +34 945 228 883  
osg-comaher@osg-comaher.com

#### **RUSSIA**

Butlerova street, 17B, office 5069  
117342 Moscow - Russia  
Tel: +7 (495) 150 41 54  
info@osg-russia.com

#### **OSG TURKEY**

Rami Kişla Cad.No:56 Eyüp  
Istanbul 34056 - Turkey  
Tel:+90 212 565 24 00  
Fax: +90 212 565 44 00  
info@osg-turkey.com

#### **ROMSAN INTERNATIONAL CO. SRL**

Reprezentant Exclusiv OSG  
23-25, Nerva Traian Street  
031044 Bucuresti - România  
Tel: +40 021 322 07 47  
Fax: +40 021 321 56 00  
romsan.int@romsan.ro

#### **AUSTRIA**

Branch office of OSG GERMANY  
Messestraße 11  
A-6850 Dornbirn  
Tel: +49 7161 6064-0  
Fax: +49 7161 6064-444  
info@osg-germany.de

#### **OSG ITALIA**

Via Cirenaiica n. 52 int. 61/63  
I - 10142 Torino - Italy  
Tel: +39 0117705211  
Fax: +39 0117071402  
info@osg-italia.it

#### **WEXO PRÄZISIONSWERKZEUGE GmbH**

Siemensstraße 13  
D-61352 Bad Homburg  
Tel: (06172) 10 62 06  
Fax: (06172) 10 62 13  
verkauf@wexo.com

#### **OSG EUROPE LOGISTICS S.A.**

10/2017 - All rights reserved. © OSG Europe 2016.

The contents of this catalogue are provided to you for viewing only. They are not intended for reproduction either in part or in whole in this or other medium. They cannot be copied, used to create derivation work or used for any reason, by means without the express, written permission of the copyright owner. If prices are stated, they are netto unit-prices and any eventual tax(es) have to be added. The company is not responsible for any printing error in technical, price and/or any other data.

Tool specifications subject to change without notice.

[www.osgeurope.com](http://www.osgeurope.com)

